

”Providing consulting services in civil engineering for over 70 years”

Institut IGH is the largest consulting company for design, engineering, supervision, geotechnical engineering and laboratory services in Southeast Europe.

We offer a wide range of engineering and consulting services enabling us to provide comprehensive support to our clients in development of large-scale infrastructure and investment projects.

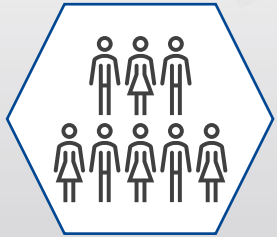


IGH was founded as a **Civil Engineering Laboratory** in 1949 and has over time become one of the largest regional engineering companies.

We have been providing consulting services in design, supervision, project management and laboratory testing for majority of infrastructure projects in Croatia and some of the major infrastructure projects in the region and internationally.



Our Team



520
Employees



100
New employees in 2020



75% in Core Business



40%
Women



175
Certified civil engineers

25
Masters of Science

20
Project Managers

13
PhD's

10
FIDIC engineers

261

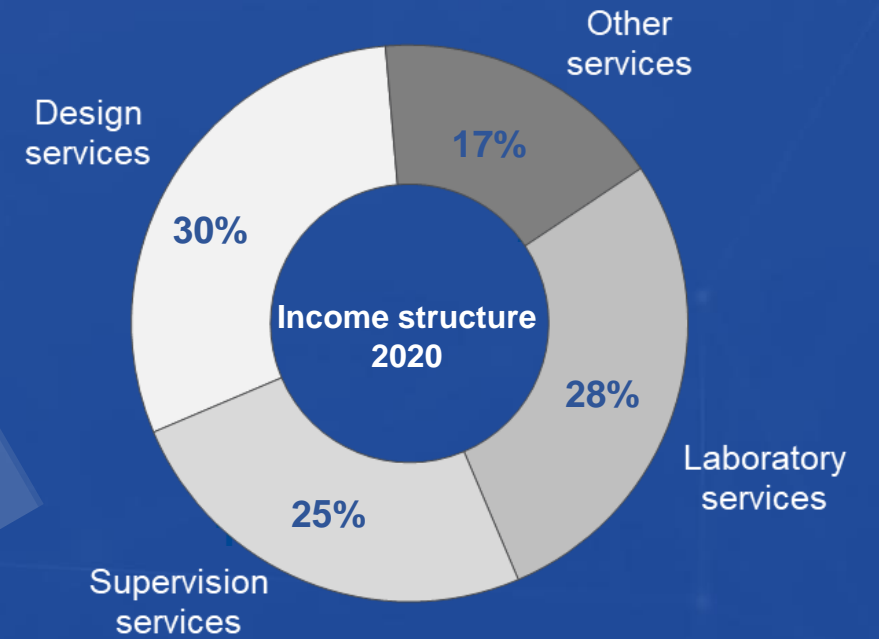
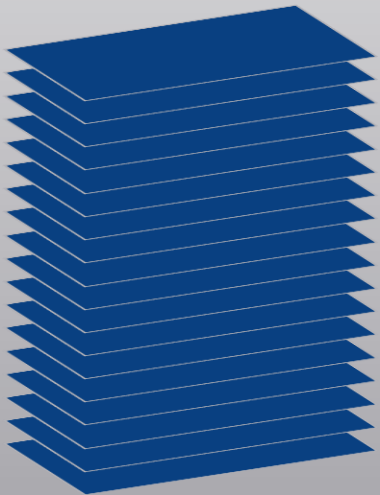
New contracts in 2020

22.5

MEUR value of new contracts in 2020

INCOME in 2020 (MEUR)

23.7



Our Sectors



1



Roads

2



Engineering Structures

3



Ports

4



Airports

5



Railways

6



Energy and Industry

7



Ecology and Environmental protection

8



Water Engineering

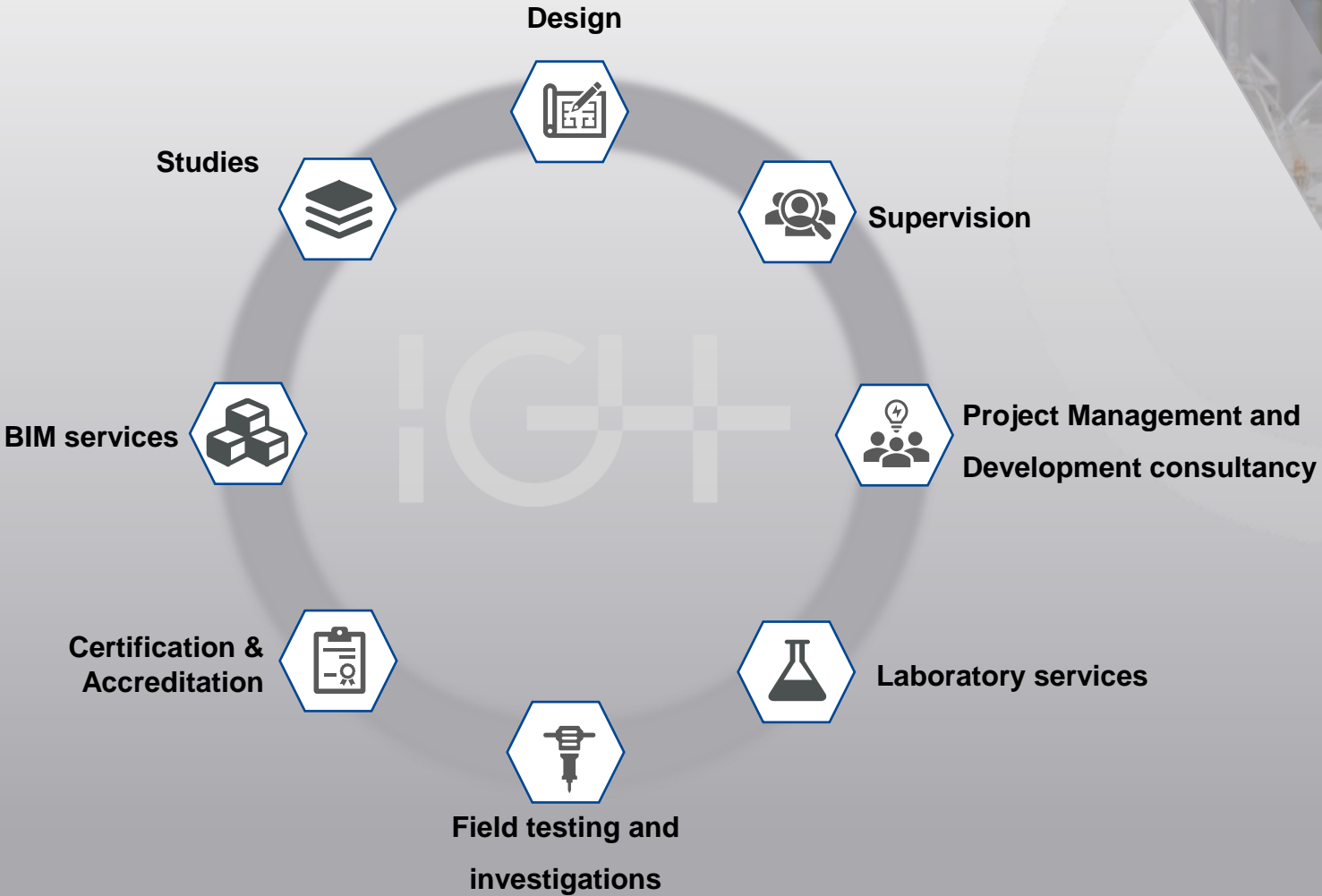
9



Building Construction

IGH provides services in several sectors relevant for today's society. We provide innovative approach and new technologies in infrastructure, being one of the cornerstones of modern civilization.

Our references are testimony of our competences and confirm our position as market leader in the region.





Design

Conceptualization and design of roads, railways, water engineering facilities, industrial buildings and public structures, geotechnical engineering project, master planning and urban planning.



Expert supervision

Supervision over the construction of infrastructure, building construction and energy. Quality control, services of FIDIC engineers and multidisciplinary services of supervising engineers according to the client's needs.



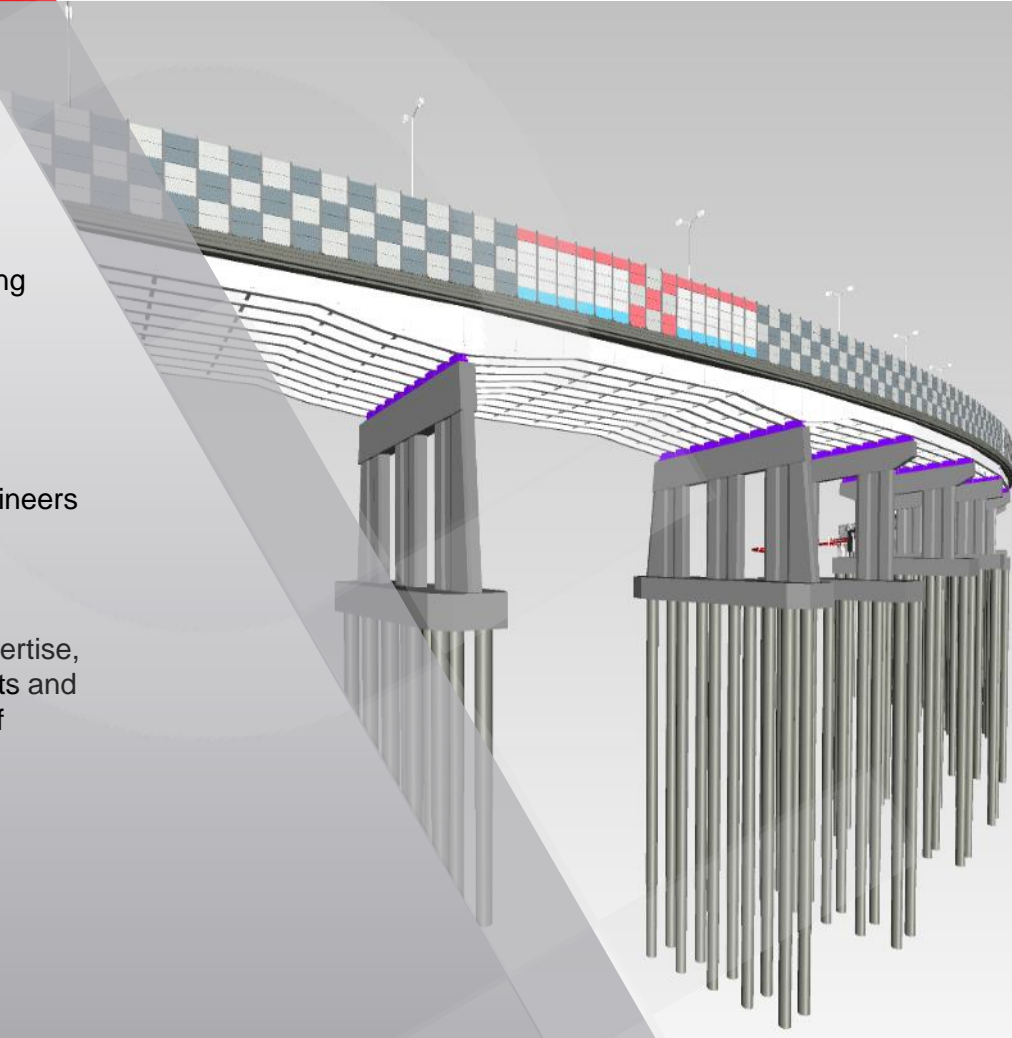
Project Management and Development consultancy

Project management, consulting services (construction expertise, technical consulting, expert analysis), preparation of projects and project applications for funding from EU funds, and funds of international financial institutions.



BIM Services

BIM process management, technology implementation and consulting, BIM education, BIM modelling.





Laboratory Services

Standard and specific services provided by accredited laboratories according to the standard HRN EN ISO/IEC 17025 (more than 500 accredited test methods).



Field testing and Investigations

Activities on exploratory drilling, field tests of soil and rocks, geophysical tests of grounds, tests of mechanical properties and water permeability of soil and rock mass, as well as activities of field measurements and observations of geotechnical structures.



Studies

Feasibility studies, environmental impact assessments, evaluation, preparation of technical documentation required for the implementation of development infrastructure projects.



Accreditation and certification

Assessment and issuance of the Croatian Technical Assessment (CTA) for the entire field of construction products. IGH Cert provides certification services, i.e. services of assessment and verification of constancy of performance for construction products.



Except laboratory services, Institut IGH also supports the services of independent bodies IGH CTA (Croatian Technical Assessment) and IGH CERT and operates in compliance with the principles of the Quality Management System.



EN ISO 9001:2015 - Quality Management System Standard

EN ISO 14001:2015 - Environmental Management System Standard

EN ISO 50001:2018 - Energy Management Standard

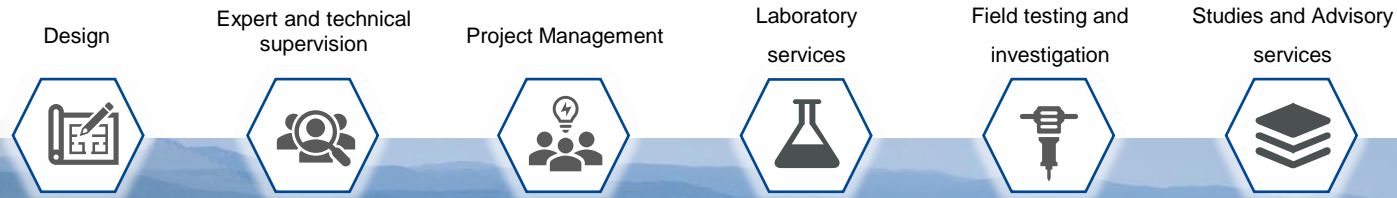
EN ISO 45001:2018 - Occupational Health and Safety Management System Standard

- 
-  Croatia
 -  Slovenia
 -  Bosnia and Herzegovina
 -  Serbia
 -  Montenegro
 -  Kosovo
 -  Albania
 -  Italy
 -  Ukraine
 -  Georgia
 -  Kazakhstan
 -  Romania
 -  Egypt
 -  North Macedonia

1

Roads and motorways





Croatian Motorways



CROATIA \ 1997 - ONGOING

Description: The Croatian motorway network integrates over 1250 km of constructed and equipped motorways, over 800 bridges and 80 km of tunnels. From the very beginning Institut IGH has been involved on most of the motorway sections, providing its services. The longest tunnels in Croatia on these motorways were designed precisely in Institut IGH and they received an international award for safety and equipment as The Safest Tunnels in Europe in 2007 and 2008.

Services: Survey works, Studies and planning documentation, Project management and Consultancy, Quality control and Laboratory services, Design and review, Filed investigations, Expert supervision.

6
bill. EUR

Design



Design supervision



Remetinec Roundabout in Zagreb



CROATIA

2018 - 2020

Description: One of the busiest traffic junctions in Croatia, with more than 100,000 vehicles passing through it every day and one traffic accident daily on the average. The general project goal was to ensure uninterrupted traffic flow, increase the level of traffic safety, reconstruct tram lines and ensure noise reduction for surrounding buildings by constructing noise reduction barriers.

Services: Development of detailed and working reconstruction designs, procedure for obtaining the Building permit and Design supervision .

330
mill. HRK

National roads in Georgia



GEORGIA

2017 - 2020

420
mill. EUR

Description: Analysis of alternative solutions of the route and detailed design development for 4 road sections (Zemo Imareti - Racha, Baghdati - Abastumani, Sno - Omalo, Lentekhi - Mestia), total length 450 km.

Services: Analysis of alternative route solutions, Detailed design, Technical supervision.

Motorways in Kosovo



KOSOVO

2010 - 2017

825
mill. EUR

Description : Morine – Merdare Motorway, Route 6 – A total of 64 km of motorways including interchanges and road equipment. Contract for Design and Construction Services with the company Bechtel Enka. Prishtina - Skopje Motorway, Route 7 – a total of 42 km of motorways.

Services: Survey works, Studies, Laboratory testing, Preliminary design, Detailed design, On-site support, As-built design, Technical supervision.

Motorways in Bosnia & Herzegovina



2007 – ONGOING

Description: Construction of motorways on Corridor Vc

- total length of approx. 122 km
- 13 tunnels
- 14 bridges and 27 viaducts
- 8 overpasses and underpasses

Services: Design, supervision

1
bill. EUR

Rreshen-Kalimash Motorway



ALBANIA

2007 - 2011

Description: Motorway section Rreshen - Kalimash is an integral part of the corridor Durrës – Morine, connecting the largest Albanian port Durrës and Kosovo. This is the most complex, 61 km long part of the corridor which passes through the central mountain massif and a very demanding terrain configuration.

Services: Technical supervision – FIDIC Red Book, Consulting, Quality control, Survey works.

6,2
mill. EUR



2

Engineering structures Bridges





Pelješac – Mainland Bridge



CROATIA

2017 - ONGOING

Description: Project of strategic importance for the Republic of Croatia, marked as „one of the civil engineering ventures that will mark our generation”.

- Extradosed, cable-stayed bridge with six pylons and 5 spans, connecting the Croatia's south with the rest of state territory
- Overall length is 2404 m
- Spans: a total of 13 spans (2x84m, 4x108m, 2x189.5m, 5x285m
- Pylon height: 98 m
- Width: 22.5 m
- Largest span 285 m

Services: Technical supervision, Quality control and Laboratory testing services.

2,08
bill. HRK

Design

Laboratory
servicesExpert and Technical
supervision

Drava Bridge



CROATIA

2011 - 2019

Description: The A5 Motorway is one of the most important routes in eastern Croatia, and the Bridge over the Drava River is the most demanding part of the project. Development of preliminary, detailed and working designs, as-built design, technical supervision and quality control are only some of the services provided by Institut IGH.

- Cable-stayed bridge, length 2485 m
- Central span: 220 m
- Lateral spans: 100 m
- Pylon height: 75 m
- Width: 28.6 m (full motorway profile)

Services: Design and design review, Technical supervision, Quality Control and Laboratory services.

115
mill. EUR

Skywalk Biokovo



CROATIA

2019 - 2020

31
mill. HRK

Description: Skywalk is a 1228m high, horseshoe shaped lookout over the sea, with a glass walkway. The lookout itself is app. 30 m long and 2m wide. The Skywalk Biokovo is a part of the Project 'New Adrion – Promoting the sustainable use of natural heritage of the Nature Park Biokovo, financed from the European Regional Development Fund.

Services: Technical supervision of construction works.

The Krk Bridge - rehabilitation



CROATIA

2018 - ONGOING

45
mill. HRK

Description: Constructed between 1976. and 1980. under IGH supervision, today its rehabilitation is under way.

Services: Specialist inspections, Survey works, Development of working design for rehabilitation works, Technical supervision and Quality control during rehabilitation works.

3

An aerial night photograph of a cable-stayed bridge spanning a harbor. The bridge is illuminated with warm lights, and its reflection is visible in the water. The surrounding city is lit up, with lights reflecting on the water's surface. The image is overlaid with a semi-transparent blue grid pattern.

Ports

Design



Expert and technical supervision



Gaženica Ferry Port and Terminal Building



CROATIA

2009 - 2018

Description: The newly constructed Gaženica Terminal is becoming the centre of national and international ferry traffic, as well as a home port for international cruise ship traffic.

This modern and functional building was built by applying the principle of energy efficiency. Also, special care was taken during design development to reduce maintenance costs.

- Coastal part: 294,360 square meters
- Land part: 598,323 square meters

It can accommodate ships of length up to 300 meters, extends over an area of 16 hectares and the total length of the coastline amounts to 1800 m.

Services: Preliminary, Detailed and working designs and Technical supervision.

143
mill. EUR



Design

Project
ManagementExpert and
Technical
supervision

Passenger Port Gruž Dubrovnik



CROATIA

2004 - 2011

Description: Reconstruction and extension works have been performed in the Port of Dubrovnik, and the fact that the port had to operate normally during works represented a special challenge. Also, it is a very narrow water area, which was an additional challenge for designers and contractors to tackle, but Dubrovnik now has a port which will be able to accommodate even the largest world cruise ships.

Services: Design and design review, Project management, Consultancy and Technical supervision.

28
mill. EUR

Port of Ploče



2008 - 2016

97,5
mill. EUR**Description:**

Projects:

- Construction of the bulk cargo terminal, Phase 1, Infrastructure construction
- Construction of container terminal
- Construction of entrance terminal and administration building

Services: Design and review, Field Investigations, Technical supervision, Studies and consultancy.

Port of Vukovar



2010 - 2013

24
mill. EUR

Description: Services during reconstruction of the bulk cargo terminal on the Dunube River in Vukovar.

Services: Geotechnical study, Main technical design, preliminary, Detailed and working designs and Foundation pit protection design.



Port of Split



CROATIA

2008 - 2016



24
mill. EUR

Description A: Bathymetric analysis, survey works, analysis of wind conditioning climate, measurement of currents and sea water quality and preparation of a synthesis of geotechnical survey works.

Description B: Preparation of designs and design documents for construction of outer berths on the breakwater of the town port.

Services: (A) Mathematical and physical modelling of waves and flows.

(B) Preliminary, detailed and working design.

Ferry terminal Drvenik



CROATIA

2010 - 2014



12
mill. EUR

Description: The project included the construction of a new ferry port in Drvenik at a new location outside the urban part of the town along the Adriatic Highway, which would enable regular ferry traffic on the lines Drvenik - Hvar – Korčula.

Services: Preliminary design.

4

Airports



Design

Field testing and
InvestigationStudies and Advisory
services

Zagreb Airport



CROATIA

2013 - 2016

Description: New passenger terminal of the international airport „Franjo Tuđman” in Zagreb was successfully completed in 2016, which provided Zagreb the opportunity of connecting with a significantly higher number of worldwide destinations and the possibility to receive more passengers in air traffic. In terms of form and function, we can distinguish three distinctive wings or units in the layout of the new passenger terminal: the main building and linear structures of the piers to the left and right. It has a surface area of 65.000m² and can accommodate 5 million passengers per year.

Services: Development of preliminary, detailed and working designs. Award winning conceptual design at international competition.

236
mill. EUR

Split Airport



CROATIA

2008, 2013 - 2014

Description: The airport has become a large transport node for millions of passengers visiting the Adriatic every year. It is connected with over 90 destinations. Institut IGH, d.d. provided number of services including final assessment of the pavement structures and final study with numerical classification calculations.

Services: Survey works, quality control and laboratory services.

Pula Airport



CROATIA

2015 - 2016

Description: Institut IGH was contracted in 2015 to elaborate a Master plan for the development of Pula Airport in the period 2014 – 2039, namely for the part relating to environmental aspects and barrier constraint area analysis, which is a mandatory part of a Master plan.

Services: Master plan for the period 2014 - 2039



Dubrovnik Airport

 CROATIA \ 2012, 2018 - 2019

Description: Dubrovnik Airport is one of nine airports in Croatia. It was first built in 1936 in the Gruda settlement. The first airport reconstruction works started in 2012 and the second in 2018. Along with the reconstruction works, extension of airport infrastructure was also under way as well as construction of all administrative buildings and structures.

Services: Concrete and asphalt testing during extension works on the parking apron, Control testing of materials and works in development of Dubrovnik airport project.

Mali Lošinj Airport

 CROATIA \ 2009 - 2013

Services: Master plan for reconstruction and extension 2014 – 2039.



Pleso air force base

 CROATIA \ 2013 - 2015

Description: Technical supervision during reconstruction and relocation of utility infrastructure.

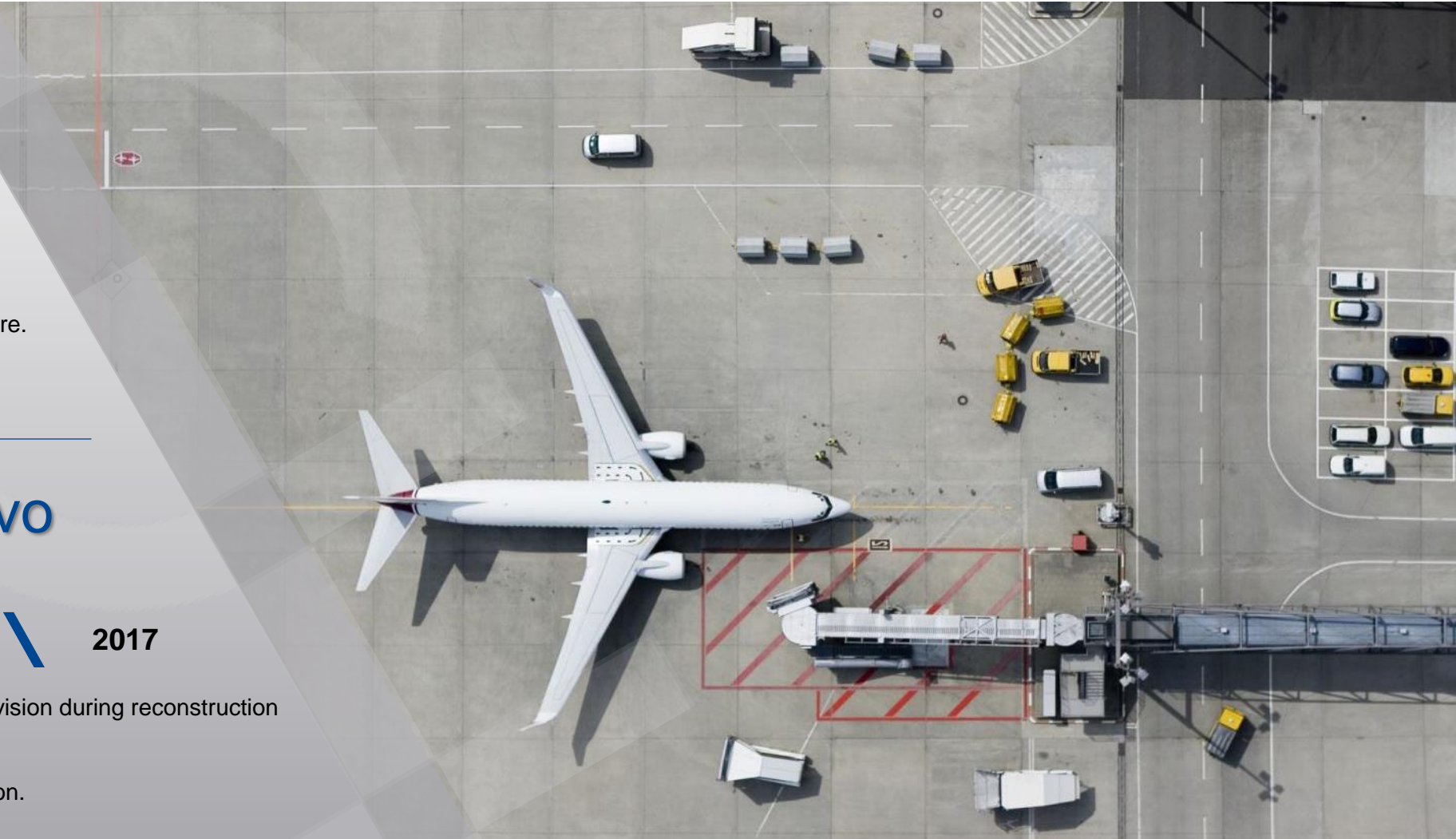
Services: Technical supervision.

Zračna luka Sarajevo

 BOSNIA AND HERZEGOVINA \ 2017

Description: Control testing and technical supervision during reconstruction and improvement of concrete aprons.

Services: Control testing and technical supervision.



5

A photograph of railway tracks receding into the distance, showing the rails, sleepers, and gravel bed. The image is partially obscured by a grey triangular overlay on the right side.

Railways

Design

Field testing and
InvestigationStudies and Advisory
services

Škrljevo-Rijeka- Jurdani-Šapjane



CROATIA

2016 - ONGOING

Description: Reconstruction of the existing track and construction of the second track on the railway line section Škrljevo-Rijeka-Jurdani-Šapjane (state borderline with Slovenia), app. 40 km long. The railway line is designed for a maximum speed of 80 km/h. The section includes 3 tunnels, 3 large viaducts or bridges, numerous overpasses and underpasses.

Reconstruction and modernization of the subject section will contribute to a higher level of service of the Rijeka Port and considering that almost 70% of the route passes through the urban tissue, town and suburban passenger transport is also planned.

Services: Feasibility study, Environmental Impact Assessment, Preliminary design, Detailed design.



360
mill. EUR

Railway Bypass of Zagreb



CROATIA

2012 - 2013

500
mill. EUR

Description: Railway Bypass of Zagreb with intermodal transport terminals (66m).

Services: Preliminary design.

Dugo Selo - Križevci



CROATIA

2009 - 2013, 2016 - ONGOING

167
mill. EUR

Description: Reconstruction of existing track and construction of the second track (38,2km). The services include reconstruction of six and construction of seven new bridges, 11 overpasses and one underpass as well as 20 km of noise reduction barriers. Railway line modernization would increase the driving speed to 160 km/h.

Services: Preliminary and Detailed designs (2009-2013), Working design and as-built design (2016 – ongoing).

Savski Marof- Zagreb West Station



CROATIA

2020 - ONGOING



49
mill. EUR

Description: Reconstruction of the 17,8 km long double track line section. The railway line is located in the RH1 corridor with an average of 160 trains passing per day. The project is mostly financed through an IBRD loan (International Bank for Reconstruction and Development).

Services: Technical supervision.

Botovo- Zagreb- Rijeka



CROATIA

2008 - 2018



3,8
bill. EUR

Description: Connects the Croatian border and the Adriatic Port of Rijeka. The railway line was designed for speeds of 160 – 200 km/h for passenger transport and 120 km/h for freight transport. The railway line section from Karlovac to Rijeka includes 3 large railway tunnels, several shorter tunnels and large viaducts. The trip from Budapest to Rijeka takes less than 3 hours.

Services: Design and design review (Conceptual design, Preliminary design, Detailed design), Feasibility Study, Transport and Traffic Studies, Environmental Impact Study.

6



Energy and Industry

Design



Studies and Advisory

services



Field testing and

Investigation



Nuclear power plant Krško



SLOVENIA

2015 - ONGOING

Description: Total capacity: 688 MW.

Services:

- Survey works and cooling tower remediation works CT2 (2015),
- Technical supervision and topographic supervision of structures (2016 - 2019),
- Situation assessment and development of a tower remediation study CT3 (2017 - 2018),
- Inspection of the condition and preparation of remediation study CT1 (2018 - ongoing).

Nuclear power plant Mochovce NPP

 SLOVAKIA \ 2007

Description: : In operation since 1998. Reactor: OKB
Gidropress VVER, Capacity: 2 x
470 MW, a total of 940 MW
Annual energy supply: 3 145 GWh
Total energy supply: 54 950 GWh (until 2010)

Services: On-site survey works and inspection in order to
assess the present status of the NPP Mochovce, block 3 and 4.

Thermal power plant Plomin 330 MW

 CROATIA \ 2011 - 2015

Description: Total capacity: 330 MW.

Services: Detailed design of temporary stack 175,5 m, Survey works on
permanent stack 340 m, General project data and background design basis,
Mechanical engineering design, Electrical engineering design, Fire protection
and occupational safety measures.



CCP Osijek

 CROATIA \ 2012 - 2015

Description: Total capacity: 450 MW

Services: Elaboration of Master plan, Feasibility study, Preliminary design, Environmental impact assessment of the TPP with switchyard , Location permit, Electrical power study, Network connection study, Basic design for heat station and thermal energy storage.

Building permit for heat station and thermal energy storage, Investment plan, Appropriate Assessment for network connection (power lines).

Basic and preliminary design for overhead power lines - 2x400 kV , Location and building permit for overhead power lines.

Combined cycle power plant TE-TO Zagreb

 CROATIA \ 2012

Description: Total capacity: 440 MWe/850 MW t

Services: Supervision on steel construction mounting, Supervision on facade mounting, Noise testing, Reservoir testing (NDT testing and anticorrosion testing).



Combine cycle power plant EL-TO Zagreb

 CROATIA \ 2016

Description: Total capacity: 88.8 MWe/439 MWt.

Services: Supervision during mounting of steel structure, Supervision during mounting of frontage/facade, Noise level testing, Testing of reservoir (non-destructive and anti-corrosion testing).

Combined thermal power plant TE-TO Sisak

 CROATIA \ 2011 - 2016

Description: Total capacity: 228 MW.

Services: Supervision of steel structures, Supervision of concrete structures, Supervision of survey works.



Wind farms

Kitka



KOSOVO

2018 - ONGOING

73
mill. EUR

Description: Total capacity: 9 x 3.6 MW.

Client: General Electric Wind Energy GmbH (Germany).

Services: Consulting services during preparation phase and execution/construction phase (Consulting Engineer).

Kovačica



SERBIA

2018 - ONGOING

189
mill. EUR

Description: Total capacity: 35 x 2.50 MW.

Client: General Electric Wind Energy GmbH (Germany).

Services: Consulting services during the development of the Execution design for Kovačica WTG steel tower.

Jasenice



CROATIA

2019 - ONGOING

14,7
mill. EUR

Description: Total capacity: 5x20 MW.

Client: Enercon GmbH (Germany) and Zagrebtrans d.o.o. (Croatia).

Services: Authorized construction management and quality assurance for civil, electrical and mechanical works.

Krnovo

 **MONTENEGRO** \ 2016 - 2017

Description: Total capacity: 20x2.85 MW i
6x2.50 MW.

Client: General Electric Wind Energy GmbH
(Germany).

Services: Authorized construction management.

120
mill. EUR

Čibuk 1

 **SERBIA** \ 2018

Description: Total capacity: 57 x 2.50 MW.

Client: General Electric Wind Energy GmbH (Germany)

Services: Consulting services during the development of the
Execution design for Čibuk 1 WTG steel tower.

300
mill. EUR

Kom-Orjak-Greda

 **CROATIA** \ 2018 - 2019

Description: Total capacity: 5 x 2.0 MW.

Client: Urbane Ideje d.o.o., Samobor (Croatia).

Services: Supervision of production and installation of steel towers and tower
foundation sections.

20
mill. EUR

Wind farms

Katuni



2016 - 2017

40
mill. EUR

Description: Total capacity: 12 x 2.85 MW.

Client: General Electric Wind Energy GmbH (Germany).

Services: Authorized construction management, quality assurance and consultancy.

Lukovac



2017 - 2018

63
mill. EUR

Description: Total capacity 9 x 3.2 MW i 7 x 2.85 MW.

Client: General Electric Wind Energy GmbH (Germany).

Services: Detailed (execution) design for WTG steel tower and its Audit.

Ogorje



2014 - 2015

72
mill. EUR

Description: Total capacity: 14 x 3.0 MW

Client: Urbane Ideje d.o.o., Samobor (Croatia)

Services: Supervision of production and installation of steel towers and tower foundation.



Wind farms

Danilo

 CROATIA \ 2013 - 2014

Description: Total capacity: 19 x 2.3 MW.
Client: RP Global Danilo d.o.o., Zagreb (Croatia).
Services: Consulting services and supervising activities.

70
mill. EUR

Rudine

 CROATIA \ 2014 - 2015

Description: Total capacity: 12 x 2.85 MW.
Client: Urbane Ideje d.o.o., Samobor (Croatia).
Services: Supervision of production and installation of steel towers and tower foundation sections activities.

53
mill. EUR

Trtar Krtolin

 CROATIA \ 2016

Description: Total capacity: 14 x 0.8 MW.
Client: Bank Austria Creditanstalt AG (Austria) i Zagrebačka Banka d.d. (Croatia).
Services: Consulting services.

12,5
mill. EUR

Wind farms

Pometeno Brdo

 CROATIA \ 2011

Description: Total capacity: 15 x 1.0 MW.

Client: Zagrebačka Banka d.d. (Croatia).

Services: Technical advisory services for the Lender.

28
mill. EUR

Senj

 CROATIA \ 2020 – ONGOING

Description: Total capacity: 156 MW .

Client. Norinco International Corporation (China).

Services: Supervision over production and installation of steel towers and tower foundation sections.

230
mill. EUR

Wind energy - Consulting

 FINLAND, LITHUANIA, AFGHANISTAN, UEA \ 2020

Description: General Electric Wind Energy GmbH (Germany).

Services: Technical due diligence/new countries compliance assessment for General Electric Wind Energy (Germany).



Design

Project
managementExpert and technical
Supervision

Gredelj Rolling Stock Factory LLC



CROATIA

2006 – 2010

Description: Construction, reconstruction and upgrades of the Gredelj Railway Vehicle Factory in Zagreb. The Gredelj railway vehicle factory occupied one of the most important spaces in the wider centre of the city of Zagreb. Therefore, its relocation and revitalization of space has been the subject of strategic planning of the city of Zagreb since the 1970s. The key step was taken in 2006 when the relocation of RSF Gredelj from the centre to Vukomerec neighbourhood began.

Services: Design, Consulting, Project Management, Technical supervision, Cost control.



80
mill. EUR

Oil refinery Pančevo



SERBIA

2011

178
mill. EUR

Description: Structural design of hydrocracking complex da/44502

W: 10 t

H: 33 m

Services: Design.

INA oil refinery Rijeka



CROATIA

2009

65
mill. EUR

Description: Structural design of hydrocracking complex

Pipe rack R1

W: 1000 t

L x W x H: 190x11x11 m

Compressor building

W: 510 t

L x W x H: 54x18x22 m

Services: Design.



Karlovac brewery facility

 CROATIA \ 2011

Description: Steel tanks and concrete structures of beer fermentation facility.
Services: Design.

CMC steel mill Sisak

 CROATIA \ 2010

Description: Structural design of main production building extension.
W: 980 t
L x W x H: 45x21x39 m
Services: Design.

Pliva pharmaceutical facility

 CROATIA \ 2014 – 2015

Description: Cabin for sampling hazardous material; New reloading ramp; New building of Quality control; Synthesis SM2 – Upgrade of API Site; Project „R&D Pilot“.
Services: Project management.



65
mill. EUR

7

Ecology and Environmental protection (EP)



Environmental impact study of the Orebić Bypass

 CROATIA \ 2020 - ONGOING

Services: Coordination, Study elaboration and management, Management of procedure with the competent authority.

Environmental impact study (CGO) “Bikarac“

 CROATIA \ 2016 - 2017

Services: Coordination, Study elaboration and management, Management of procedure with the competent authority.



Reconstruction of the link to the Goričan Border Crossing on the A4 Motorway Zagreb-Goričan

 CROATIA \ 2020

Services: Supervision of landscaping works, preparation of Final report, participation in the final field inspection of structure.

Feasibility study of improvement of traffic connections between Korčula and Pelješac

 CROATIA \ 2019 - 2020

Services: Elaboration of chapter on environment (climate change, water and water bodies) and nature (ecological network, habitats, protected nature areas) for the Feasibility Study, assessment of alternatives for the CB analysis and selection of the best alternative.



Environmental impact assessment Baranja, Beli Manastir- Osijek Motorway

 CROATIA \ 2012

Services: Preliminary, detailed and working design of the rest area with children's playground.


EIS and Appropriate Assessment of the project - interchange on the state road DC8 and intermediate road Vučevica

 CROATIA \ 2019 - 2020

Services: Elaboration of Environmental impact study, Appropriate Assessment and participation in the procedure of obtaining the Appropriate Assessment Decision issued by the Ministry of Economy and Sustainable Development of the Republic of Croatia.



8



Water engineering

Design



Zabok reservoir



CROATIA

2011

Description: Construction of Zabok reservoir $V = 1,500 \text{ m}^3$.
Supervision centre for water distribution in the area of Zagorje with
its laboratory and small educational centre.

Services: Preliminary, Main and Detailed design.



Design



Wastewater treatment plants Poreč



CROATIA

2016 - ONGOING

Description: Construction of 4 wastewater treatment plants

- Lanterna 30.000 ES
- Poreč north 37.000 ES
- Poreč south 48.000 ES
- Vrsar 22.500 ES

Services: Preliminary, Detailed and Working design.

38
mill. EUR



Drainage system Zagreb



CROATIA

2015 - ONGOING

280
mill. EUR

Description: Development of designs and design documents for the reconstruction and construction of wastewater drainage system of the Zagreb agglomeration.

Services: Preliminary design, Detailed design.

Zone zero of the Zagreb City water supply system



CROATIA

2020 - ONGOING

Description: Construction of the pump station PS Klin (Q=600 l/s). Well field Mala Mlaka – establishment of zone zero.

Services: Preliminary, Detailed and working designs.

Multi-purpose canal Danube – Sava River



CROATIA

2019 - ONGOING

Description: Feasibility study of the Multi-purpose canal Danube – Sava River

Services: Analysis of the technical solution alternatives, Feasibility study.

Donji Miholjac Agglomeration



CROATIA

2019 - ONGOING



15
mill. EUR

Description: EU project "Development of water and utility infrastructure on the service area of the Miholjac vodovod d.o.o. – Donji Miholjac" (Miholjac Water Supply Company).

Services: Preliminary and detailed design, sewage and wastewater treatment systems, Tender documentation, Feasibility study, Application package.

Conceptual design of the water supply system Križevci



CROATIA

2018 - 2020



33
mill. EUR

Description: Conceptual design of the water supply system Križevci and Pre-Feasibility Study.

Services: Analysis of the present situation and potential needs, Mathematical model of the present and future situation, Conceptual design of the system upgrade, flow and pressure value measurements, Pre-Feasibility Study.

Drainage system of the agglomeration Ivanić-Grad



CROATIA

2015 - 2018

14
mill. EUR

Description: Development of design and design documents for the construction of the drainage system and wastewater treatment system of the Ivanić-Grad agglomeration.

Services: Preliminary design, Detailed design.

Drainage system and wastewater treatment system - Varaždin



CROATIA

2011 - 2016

120
mill. EUR

Description: Preparation of documents for the drainage system and wastewater treatment system of the Varaždin agglomeration, financed by EU.

Services: Environmental impact assessment, Feasibility Study, Appropriate assessment (Natura 2000), Project application.



9

A photograph of a modern, curved glass skyscraper with a grid-like facade. The building is illuminated from within, and the sky is dark. The image is partially obscured by a large, semi-transparent 'IG+' logo on the left side.

Building construction

Ruđer Bošković Institute



CROATIA

2017 - 2020

Description: Reconstruction and construction of the scientific research complex Ruđer Bošković Institute. One of the largest investments in scientific research in Croatia. Architects: Ena Bičanić Marković, Natalija Mavar, Berislav Krtalić, Ana Alar and Saša Randić
Services: Consulting, Design.



72
mill. EUR

Andrija Štampar School of Public Health



CROATIA

2001 - 2004

Description: Reconstruction and upgrade of the building "School of Public Health" Andrija Štampar in Zagreb.
Services: Design, Design supervision.



2,5
mill. EUR



Ban Centre



CROATIA

2011 - 2013

21
mill. EUR

Description: Construction of commercial and residential building in the city centre.

Services: Design, Consulting, Supervision, Control of costs and expenditures.

Bundek Centre



CROATIA

2009 - 2012

80
mill. EUR

Description: Construction of commercial and residential building.

Services: Design, Consulting, Supervision, Control of costs and expenditures.



Westgate Centre

 CROATIA \ 2005 - 2008

114
mill. EUR

Description: Construction of a large shopping mall near Zagreb.

Services: Supervision, Control of costs and expenditures.

Avenue Mall

 CROATIA \ 2005 - 2009

70
mill. EUR

Description: Construction of a shopping and business centre in Novi Zagreb.

Services: Consulting, Technical supervision.



Arena Centre



CROATIA

2008 - 2011

220
mill. EUR

Description: One of the biggest shopping malls in Zagreb with a surface area of 175.000 m².

Services: Technical supervision, Control of costs and expenditures.

Sky Office



CROATIA

2008 - 2011

80
mill. EUR

Description: Construction of a commercial building in Zagreb.

Services: Technical supervision, Control of costs and expenditures.



Logistics and distribution centre „DALMATINA“ Dugopolje



CROATIA

2009 - 2011

Description: The building is intended to serve as a storage and distribution centre of goods with differing temperatures (from deep freeze to daily temperatures) for stores in the wider area of the region.

Services: Design, Technical supervision.

51
mill. EUR



Design



„Maksimir“ Stadium in Zagreb



CROATIA

2016 - 2018

Description: Reconstruction and covering of the north and west stands of the "Maksimir" stadium in Zagreb.

Services: Design.

130
mill. HRK



Spaladium Arena



CROATIA

2007 - 2009

Description: Design of a multi-functional hall for sports and entertainment events in Split.

Services: Conceptual design, Preliminary design, Detailed design, Working design, Project management, Technical supervision, Control of costs and expenditures.

63
mill. EUR

Višnjik Arena



CROATIA

2004 - 2008

Description: Supervision of construction works on the multi-functional, multi-purpose town hall in Zadar.

Services: Technical supervision, Control of costs and expenditures.

91
mill. EUR

Hotel Laguna Parentium



CROATIA

2011 - 2012

21
mill. EUR

Description: Reconstruction of the Hotel Laguna Parentium in the Green Zone of the town of Poreč. That is the first hotel with an energy certificate class "A".

Services: Project management and consulting, Technical supervision.

Tourist resort Amarin



CROATIA

2011 - 2013

120
mill. HRK

Description: Demolition and removal of the buildings of apartment resort B1, construction of new apartments B1, reconstruction of restaurant and swimming pool and landscaping.

Services: Technical supervision.

Hilton Costabella Beach Resort&Spa

78
mill. EUR

 CROATIA \ 2017 - 2021

Description: Construction of a hotel complex, beach and docks for small boats of the highest category near the city of Rijeka.

Services: Technical supervision.



Partners and clients



Address:

Janka Rakuše 1
10000 Zagreb
Croatia



Phone:

+385 1 6125 125



Fax:

+385 1 6125 401



E-mail:

igh@igh.hr



Web:

www.igh.hr

“For over 70 years providing expert support services in civil engineering”

Institut IGH, d.d.